

Pittenweem Post

15 August 2025, Issue no. 32

Pittenweem Post is our monthly community newsletter, produced by volunteers at Pittenweem Community Library. Publication is normally on the 2nd Friday of the month. Back issues are on our website www.pittenweemlibrary.org.uk.

Paper copies are also available at various outlets in Pittenweem including Barnetts, One Market Place and the Library – copies are free but we welcome donations of £1 to offset the cost of printing.

SPONSORING THE POST

This edition of Pittenweem Post was generously funded by Geoff Morris. If any reader would like to donate the £50 needed to publish the Post each month, this would be most gratefully received by the treasurer of Pittenweem Community Library. Contact Caroline at trustee@pittcllc.org.uk.

DON'T MISS YOUR COPY OF THE POST! Would you like to receive the Post by email?

If so, all you have to do is email post@pittcllc.org.uk with *Subscribe* in the subject line. You will receive an email on the second Friday of each month with a link to the new issue of the Post. The Post keeps you up to date with what's happening in the Pittenweem area. If you enjoy reading it please tell your friends and neighbours. Interested in contributing? Our editor Roger Brown would love to hear from you at post@pittcllc.org.uk.



WHAT DO YOU KNOW ABOUT PITTENWEEM?

Where was King's Halt and what happened there?

Did St Fillan really live in the cave on Cove Wynd?

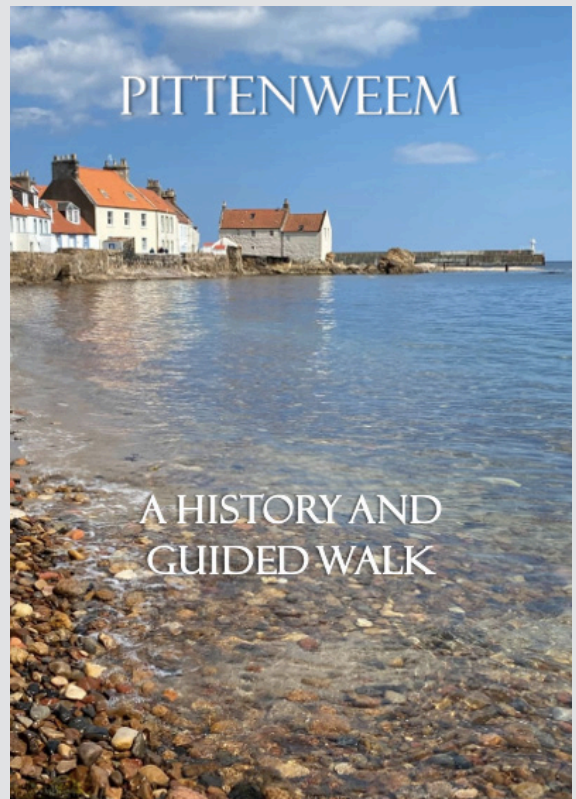
How did Waggon Road get its name?

What happened to the market cross?

The answers are to be found in the newly published *Pittenweem: A History and Guided Walk*. Whether you are a resident of Pittenweem or a visitor you are sure to find something you didn't already know or had forgotten. This interesting and well researched concise history was originally written by local historian Paula Martin in 1990. Paula also wrote histories of St Monans and Newburgh, now sadly long out of print.

The Pittenweem history has fared better. Paula kindly gifted the copyright to Pittenweem Library and the library updated it in 2018. This new version, published last month, has a revised text, a new easy-to-use map and a very useful index. Follow the guided walk around the burgh and you can see the history of Pittenweem preserved in the houses, the remains of the old priory, and the harbour.

Copies are on sale, price £4.99, at the library, the Hub, One Market Place and Crail Museum. All proceeds go to support the community library, which also produces the Welcome to Pittenweem leaflet and a leaflet about the wynds, beautifully illustrated by local artist Jim Stormonth.



PITTENWEEM ARTS FESTIVAL 2025: AN ODYSSEY OF EMOTION!



Courtesy of PhotosbyZoe

If art is about emotion, then this year's Pittenweem Arts Festival was an odyssey in every sense – a journey through joy, reflection, connection, and, occasionally, the brisk headwind of a Scottish summer. My own exhibition, *Mood Swing*, felt like a fitting compass for a week that carried us from sun-drenched serenity to windswept resilience.

We began in glorious sunshine, West Shore shimmering like the Mediterranean. Families picnicked by the sea wall, puppeteers enchanted children, and music spilled joyfully into the salty air. Artists' doors swung open, each venue a new chapter in our shared voyage of creativity.

Aimee Henderson's calm, contemplative space offered a harbour for those seeking stillness – visitors lingered, many visibly moved by the serenity her work provided. The emotional current flowed on with sisters Lucy and Kirsty Anderson, painter and potter, whose return to Pittenweem was as much about rekindling childhood memories as sharing their craft.

And then came the joy of co-creation: Jade Stout inviting visitors to choose the position of her next line on an intriguing canvas, a children's interactive art event where an entire undersea world emerged over the week, and Phill Jupitus happily crafting collages from behind his barn door while exchanging the best craic with passers-by.

Music accompanied us at every turn – from folk to rock to jazz – transforming the sands and the Church Hall into a surprisingly hip port of call. Gail McGarva's exquisite Story Boat and skiff brought maritime history into the heart of the village, a reminder that craftsmanship is itself a voyage through time.

For me, a standout moment was interviewing the remarkable Gerard M Burns. As he spoke about painting the great, the good, and the deeply beloved, the room was charged with a moment of togetherness – an acknowledgement of the humanity behind the art – the kind of moment that stays with you long after the tide shifts.

On the Monday – and in true East Neuk style – the weather itself shifted. Storm Floris forced us to close for the day – a difficult but necessary decision for public safety. We emerged a little more windswept, perhaps, but more experienced, and definitely 'interesting'.

It was, as ever, a week of immense effort. Our workers and volunteers gave their all, and I am deeply grateful. I also know that for our community, festival week brings its own challenges alongside the colour and buzz. Thank you, sincerely, for your patience, your good humour, and your willingness to share our village with the world for these few days.

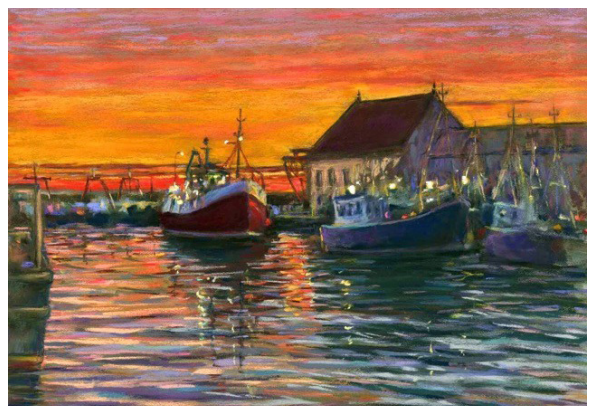
To everyone – artists, visitors, residents – who joined us on this year's odyssey of art: a massive thank you and a virtual hug. Until we set sail again.

Julie Arbuthnott, Chair

PITTENWEEM ARTS FESTIVAL – AN ARTIST'S VIEW

It is a privilege to be able to exhibit at Pittenweem Arts Festival. I find painting and drawing is my means to communicate what I feel about a subject. When someone connects with what I am trying to convey this is a full circle experience. This also affirms my vocation in life. Being at the festival gives the artist an audience and helps to encourage their journey. I love it when children show an interest and are inspired by visits to venues. With a bit of encouragement they will open up and ask some wonderful questions.

Gina Wright





STORY BOAT MAGIC

The Patron of the festival, Willie Rennie MSP, was captivated by the Story Boat down on the Gyles and the work of award-winning boatbuilder Gail McGarva, who spent time with members of the Pittenweem Rowing Club. During the festival children could be seen dancing round the boat, awaiting their turn to hear a story within the miniature maritime world, caught by the inspirational storyteller. Visitors were equally engaged by the adjoining *Disappearing Lines* installation, its powerful simplicity silencing those of us who encountered it.

A MESSAGE FROM YORKSHIRE – MEMORIES OF THE ARTS FESTIVAL



For many years we have visited Pittenweem to visit our longstanding Scottish friends, whom we first met at Loch Tay 20 years ago. Fife, with all its havens of small fishing villages, offers a colourful, lively and friendly place to visit. So, what better time to come than when the Pittenweem Arts Festival is in full swing.

When the festival brochure arrived through our letterbox, we opened it to a feast of colour, cultural delight and interest. On reading the brochure alone, the endeavour of all those involved in planning such a lovely and exciting event shone through. How could we miss this opportunity to visit our lovely friends in our favourite holiday destination, while also being surrounded with such vibrant art?

We decided to search for an interesting place to stay and were not disappointed as there was an abundance of choices. We eventually found a quiet secluded cottage in the grounds of a beautiful country house, a stone's throw from the coast. Fabulous!

The brochure became a friendly guide in the weeks leading up to our visit; it gave us an eagerness and anticipation for what was to come. It will be a souvenir to revisit in the winter months bringing happy memories. We were so impressed and encouraged by the emphasis on community, children and family activities, inviting creativity and interest in exploring the arts, music and stories.

One of the many highlights of our visit was to participate in Kiri Stone's Mushroom Wood Carving Workshop. Kiri was excellent, bringing together young and old together in a friendly space (the Fishmarket – we got used to the smell!) to learn and produce a mushroom carving out of birch wood. Both of us, in our early 70s, making mushrooms will be a lasting happy memory – it was fun and engaging.

Offering heartfelt thanks and appreciation for this splendid event and gratitude to all. We have definitely felt 'inspired, challenged and uplifted' by our experience and will carry the stories to our family and friends on our return to Yorkshire.

Benita and Mark Treanor, Knaresborough, August 2025

ARDROSS FARM NEWS

Step Into the Season: A Guided Farm Walk at Ardross Saturday 30 August | 11am–12.30pm

Ever wondered where your food really comes from? Take a behind-the-scenes wander with us through Ardross Farm this August and discover what's growing, grazing and blooming in the height of summer.

Led by a member of our family, this easy walk takes you through swaying fields of heritage grains, lush rows of summer vegetables, and past our contented cattle in the pasture. We'll share how we work with nature to grow nutritious food and care for the land.

There'll be tasters along the way, time for questions, and plenty of fresh air, birdsong and countryside views to soak up.

Perfect for anyone with a love of food, farming or the great outdoors.

Places are limited – booking is essential.

Reserve at www.ardrossfarm.co.uk or call 01333 331400



Farm to Barn: An Autumn Feast of Field and Flame Thursday 25 September | 7–11pm | Pratis Barns, Leven KY8 5NX

As the fields mellow into gold and the harvest comes home, two family-run Fife food businesses invite you to a celebration of the season.

Ardross Farm and **Pratis Barns** are joining forces once again to present **Farm to Barn**—an atmospheric evening of local food, honest storytelling, and warm hospitality, all set within the beautiful surroundings of Pratis Barns.

The evening begins with a welcome drink and handmade canapés before guests are seated at long banquet tables under the beams of the rustic barn. From there, the journey begins—a multi-course feast built around the very best produce from Ardross Farm, just a few miles down the road.

The menu remains a closely guarded secret until the week itself, ensuring it reflects exactly what's in season—from pasture-raised meats to vibrant autumn vegetables, heritage grains and more. In spring, diners gathered over slow-cooked beef; in summer, they passed lamb roasting over an open fire. This time, the flavours of autumn will take centre stage.

Throughout the evening, **Nikki** from Ardross and **Patrick**, head chef at Pratis, will guide you through each dish—sharing the stories of the farm, the land, and the inspiration behind the menu.

If you love good food with real roots, this is not to be missed.

Tickets £85pp, includes welcome drink, canapés and full meal.

Booking essential via www.pratisbarns.com/pratis-presents



ARTIFICIAL INTELLIGENCE AND COPYRIGHT

Wendy Chamberlain writes: Artificial Intelligence technology (AI), presents huge opportunities to transform our economy and people's lives for the better, but it also presents significant risks. One major risk is that creatives across the world are having their work and livelihoods stolen by AI.

Here in North East Fife we have a plethora of talented creatives including author Marion Todd, who recently contacted me about the fact that her work had been illegally uploaded to a site called 'LibGen'. Meta then scraped the website for all its content to train its AI models. Not only is this a breach of copyright, it is also illegal. I soon realised that a chapter I had written for a book had also been subjected to this process.

During a debate in Westminster on the impact of AI on intellectual property, I raised Marion's case and emphasised the need for transparency when it comes to where AI companies are sourcing the materials they are using to train their AI models. We need to see a full response from Meta to explain this and why the use of illegally uploaded material on LibGen was authorised in the first place.

I have also met with representatives from the News Media Association who represent many of the biggest news publishers in the UK and also convene the Creative Rights in AI Coalition to further discuss this.

The Liberal Democrats have tabled five amendments to the Data (Use and Access) Bill. The amendments would ensure that existing copyright laws are enforced on generative AI models, ensuring fair remuneration for works used to train these models. We are also seeking greater transparency from AI companies to ensure that creatives are empowered to know when and how their works will be used.

The creative industries have been clear that failure to apply existing copyright laws to AI model training presents an existential threat. They are being asked to allow their output to be used to train models that could be in direct competition with them.

The Government has proposed an 'opt-out' system with the expectation that if creatives do not opt out, their work will be used to train AI models. Although it may sound reasonable, the EU implemented this several years ago and still have not found a model where this is properly functional. If the UK want to follow this, we need to ensure that it works fairly and gets the balance right.

Editor's note: In her Arts Festival talk on the importance of libraries Val McDermid raised this same issue, commenting on how her own work had been 'scraped' for use in AI training without her permission. She stressed the risk this poses to writers' livelihoods and the urgency of legislation to bring this practice to an end.

THE EAST NEUK ACTION GROUP OF CHILDREN FIRST

**Afternoon Tea, in the British Legion Hall, Crail
Saturday 30 August, 3–4.30pm; entry £5**

This year the main aim of the **East Neuk Action Group** has been to provide caravan holidays for two families at the Elie Holiday Park. These have been successful in allowing the families to enjoy their first ever trip away from home for a relaxed change of scene.

The East Neuk Action Group of Children First is very grateful to all our loyal local supporters for helping us to realise this aim.

Further information about our work can be obtained from Shelagh Lamb at prendylamb@googlemail.com.



FANCY A DABBLE AT SCRABBLE?

Language is like a living thing, constantly evolving as new words enter common usage.

It is a thing of beauty. It informs, communicates and inspires imagination and any community library is an essential source of such knowledge.

Language can also entertain. Did you know that approximately half of all households in the UK own a Scrabble set? The game first appeared as 'Criss-Crosswords' in 1931, the invention of an American architect named Alfred Butts. In 1948 James Brunot acquired the rights and renamed it 'Scrabble'. However, it did not appear in the UK until 1955 when it was manufactured by J W Spear, a Jewish board games manufacturer who had previously relocated to Britain to avoid persecution by the Nazis in Germany.

The game, now manufactured by Mattel, is available in over thirty languages worldwide including a braille edition supported by the RNIB and, like our dictionaries, is regularly updated with fresh words often representing our wonderful multi-cultural society and culture. This also includes Scots words. Recent additions include 'Baffies' (a Scots word for slippers), 'Geggie' (a Scots word for mouth) and 'Bauchie' which means a muddle or a mess.

Scrabble rules do not allow proper nouns but did you know that 'ABBA' is permissible because it is actually a Coptic bishop, and 'Abigail' is a lady's maid! Fans of the cinema are not excluded. A 'dumbledore' is actually a species of bumblebee and 'droid' and 'Jedi' are also included (but not Yoda).

Pittenweem has its very own amateur Scrabble Club which meets every Thursday afternoon at 2pm in the Community Library. If anybody fancies a dabble at scrabble you will always be made welcome. We have a short break during our spectacular Arts Festival but return for more fun and fascination from August 14th.

We would not exist without the support of our library and its volunteers and they thoroughly deserve the thanks of the entire Pittenweem community for all their good works.

And just in case you were wondering – the word Scrabble may be a proper noun but 'scrabble' is also a verb meaning 'to use fingers to find or hold on to something' so if you should manage to place it on your board you would receive a bonus of fifty points for using all seven of your letters!

Keep smiling!

Meic Brooks



NEWS IN BRIEF

The Hub is open on Sunday mornings – you can now get your fresh rolls, usual groceries and Sunday papers from the Hub, open on Sunday mornings from 8am till 12pm.

Pittenweem Parish Church festival news – we were pleased to welcome some 1600 visitors to the church to view our beautiful stained-glass windows and enjoy our daily 'Music in the Kirk' concerts. Our thanks go to all those who were kind enough to perform. A total of £1,300 was raised for church funds.

Thank you also to everyone who volunteered at the 'Blind Date with a Book' stall and who donated the books. The stall raised £2,500 to support the vital work of the Red Cross.

The Edinburgh Sketcher returns to Kellie Castle for his final sketching workshop of the summer on Friday 29 August. The workshop runs from 10.30am to 1.30pm and prices include all materials and light refreshments. Tickets for sale from the Kellie Castle and Garden Eventbrite Page:

<https://bit.ly/Edinburgh-Sketcher>

FISHING NEWS FROM THE PITTENWEEM REGISTER

No. 37 SATURDAY Aug. 30, 1845

[PRICE ½d]

THE FISHERY

The fishing went on this week much in its usual way, until Saturday, when the Shore of Pittenweem exhibited a scene of the liveliest nature; boat after boat came in with excellent hauls, some as high as 85 barrels. All hands were diligently employed in the curing of them, and it was difficult to get enough of workers. The bell was sent through the town in the middle of the day offering 8d per barrel, as an inducement to get more assistants, which had the effect of collecting all who were acquainted with the curing of herrings. After nightfall, the work still continued with unabated vigour. Every station was lighted with numerous candles, which the calmness of the evening allowed to burn as if in a room; and the Shore, viewed from a distance, presented the appearance of a fair, held by torch-light. The merry song of the women, while they were busily going on with their work, had an enlivening effect. The shoal of herrings was only about a mile from the harbour; and each boat, with its twinkling light, could easily be seen, which looked as if the sea partook of the general rejoicing, and an illumination of its own.

[Copies of most issues of the Register are preserved in the archives of the Fisheries Museum and some years ago Fife Family History Society converted them to a digital download, which is available for £5 from <https://fifefhs.org>]

BUSINESS FOCUS – THE LITTLE GALLERY

The distinctive Little Gallery sign has been part of the High Street since 1987, when Ursula Ditchburn and her geologist husband bought the premises. Formerly a teacher of German in Dunfermline, Ursula with her beloved dachshunds soon became well-known figures within the village. Indeed, Ursula's seventh dachshund breathed her last only a few months before her mistress, who was still pricing antiques from her hospital bed a short time before she died in June 2022, aged 93. Her legend lives on.

Ursula, who hailed from Switzerland, studied Art History, and as a student had a job in an antiques shop in Zurich. Her love of things wooden became a passion and her shop was and remains focused on what she called 'Rustica' with local joiner Colin McIvor producing stools for her to paint in a traditional rustic style. Antiques and modern art are at the core of the business. Ursula welcomed antiques from cutlery and china to memorabilia of every kind. Her Aberdonian supplier of wicker baskets and seaglass continues as does upholsterer Lou Lyndon.

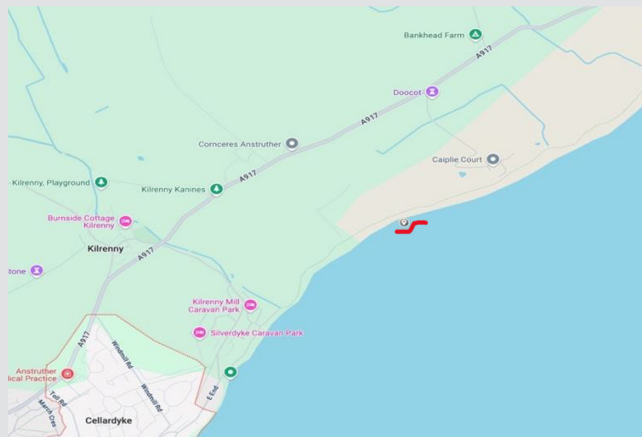


David Ditchburn of Little Gallery

Ursula supported local artistic talent at the Pittenweem Arts Festival over many decades. She gave exhibition space to artists who remain highly regarded and include Colin Jack, Pat Holland, Elizabeth Shepherd from Crail and Anne Smith from Cellardyke, and ceramics and glass designed by Suzan Hutchinson from Cupar. This tradition continues under the management of her son, David. In the day-to-day running of the shop, David said the late Lorraine Smith had been a great source of support to his mother when the business started, while he is supported among others by Cupar artist Andrew Parry.

Open from May to October, the shop has an ever-changing stock of merchandise. Art is all original with a mixture of watercolours, oils and all things in between. When asked what currently sells, David reports that one day it might be mirrors or another clocks. No two days are the same; the market is flexible and unpredictable. That's what keeps it a lively and much-loved local 'institution'.

Over the years the shop has enjoyed its 'drop-ins' from far and wide, which have included HRH Princess Margaret and Emma Thompson. Many customers are local. What continues to attract all and sundry is the friendly and relaxed ambience, the reasonable pricing and the truly eclectic mix. 'Buy it if you like it' remains the advice that Ursula would have given.



TIDE LINE

By Julie Brook

Tide Line is an invitation to walk in the intertidal space of the seabed made from the surrounding stones. The tides are a powerful expression of the gravitational pull of the moon on the oceans. At the moments of the incoming tide 2 hours before high tide and at the outgoing tide 2 hours after there is a dynamic tension that Tide Line reveals where you can see the shift and change of the tide clearly marked and sense this gravitational pull.

Tide Line is sited near the coastal path between Cellardyke and Caipie Farm. It was commissioned by Beach of Dreams with Fife Coast & Countryside Trust and Creative Scotland in May 2025.

SPACE
TO
BREATHE

MAKING WAVES BREAKING GROUND



ART EXHIBITION

at BOWHOUSE, St MONANS, FIFE, SCOTLAND KY10 2DB

In collaboration with Purdy Hicks Gallery

19 JULY - 4 AUGUST

&

16 - 31 AUGUST 2025



HAMISH HENDERSON AN ARTIST'S INSPIRATION

CRAIL COMMUNITY HALL 23.08.25 7PM - TICKETS £10 - BYOB

What inspired artist Charles Nasmyth to paint a portrait of folklorist and poet Hamish Henderson? In this new film, Charles considers the extraordinary and many faceted talents of one of Scotland's greatest 20th century cultural figures.

OUR LOCAL CHOIR HAS A DYNAMIC NEW CONDUCTOR. COME AND JOIN US!

We are the Anstruther Philharmonic Choir, a group of around 40 members from around the East Neuk with a wide range of ages and levels of experience. The arrival of our dynamic young conductor, Au Arias, has given us an infusion of creative energy and seen us reach new heights of musical performance. We performed Au's original composition of the Tango Mass, an intricate and energetic piece fusing dance rhythms with the structure and words of sacred choral tradition, to a very enthusiastic audience at our Spring Concert in April.

We will be singing another exciting programme for our Christmas Concert this December. Au's enthusiasm makes our rehearsals challenging but also rewarding and fun. He gives us the opportunity to grow in confidence and enthusiasm while broadening our engagement with a wide range of choral music.

We are always looking for new members of any ability or experience to join us. If this sounds like something you might enjoy, why not come and meet us? We will be holding an informal social event in Crail on the evening of Tuesday 19 August at 7pm. We will start by sight-singing some easy music together in the beautiful Crail Church. After this, we will head to The Shoregate in Crail for drinks and a chat.



If you are interested, you would be very welcome. Please send an RSVP to our friendly secretary Helen at secretary@anstrutherphilharmonic.org or text 07909 972127 so that we can look after you.

Our rehearsals for the autumn term are on Tuesday evenings at 7pm at the Coastline Community Church in Pittenweem and will restart on 23 September.

For more details, check out our website www.anstrutherphilharmonic.org or follow us on social media by searching for the Anstruther Philharmonic Choir. We very much look forward to welcoming you to our choir!



RARE VISITOR TO PITTENWEEM

Wednesday 30 July saw an amazing sighting of a sub-adult Basking Shark. The shark had been spotted swimming just off Mid Shore by local fisherman Conner Smith, who posted a video showing the Basking Shark, the second largest fish in the world, swimming over the skerries between the harbour and the white rocks. The shark stayed in the area for hours giving people a once in a lifetime opportunity to see this gentle giant of the seas up close as it swam within inches of the breakwater.

David Thomson

**ST ANDREWS 2025
MODEL RAILWAY EXHIBITION**
www.eastneukmrc.co.uk

Saturday 16th August: 10:00-5:30
Sunday 17th August: 10:30-5:00

Prices:
Adults £6
Children £3
Family (2+2) £15
Cards Accepted



**St Andrews Model Rail
2025**
East Neuk Model Railway Club

**St Andrews Town Hall
Queen's Gardens
St Andrews, Fife, KY16 9TA**



THE EAST NEUK MODEL RAILWAY CLUB

The Club was formed in 1984 and its first club rooms were at Anstruther holiday camp; it moved to Pittenweem Old Town Hall about 25 years ago.

The Club has been organising a show in St Andrews for about the last 30 years and Arran Aird has been the manager for at least 25 of them. In addition, the Club exhibits its layouts as far away as London and Elgin.

The Club meets on Wednesday and Sunday nights at Pittenweem Old Town Hall between 7pm and 9pm. Anyone interested in finding out more or attending a meeting should contact Arran by email arranaird@gmail.com or talk to him and other members at the exhibition in St Andrews Town Hall on 16 and 17 August (see the poster for more details).

SHORT-TERM LET CONTROL AREA QUESTIONNAIRE

Fife Council is currently running a consultation on short-term lets and the principle of designating short-term let control area(s) in Fife. The introduction of a control area would mean a property owner who is letting out a property that is not their principal home on a short-term let basis would have to apply for 'change of use' approval through the planning application process. This will only apply to a proposed 'change of use' and does not apply retrospectively nor does it mean a blanket ban or moratorium on short-term lets.

Given the strong feelings on both sides of the debate regarding over-tourism in our community, I would urge everyone to give their views using the following link before 8 September:

<https://haveyoursay.fife.gov.uk/place/short-term-lets/>

Councillor Sean Dillon

FOOTPRINT EAST NEUK

We're Footprint East Neuk, a small local charity restoring woodlands and re-connecting people with the natural world across East Fife. We believe protecting and restoring nature is vital for wildlife and for our communities' wellbeing.

We're delighted to share that we've recently taken ownership of Dreel Woods, a lovely pocket of woodland near Anstruther, from Fife Council. With the support of local volunteers and funding partners we're redeveloping the site so people of all ages and abilities can enjoy the burnside, spot birds and wildflowers, and feel part of the landscape. In April we completed works to create an accessible path through the woods, and our efforts are closely linked to the Dreel Burn Project, restoring the burn's ecology and improving water quality. We hope that together we can ensure that plants and animals can thrive in the woods as well as in the burn.

On the ground our work ranges from planting native trees and removing invasive species to running workshops and organising guided walks. We run regular community planting days and family nature sessions so children and adults alike can learn about trees, rivers, and the animals they support. To date we have planted approximately 9,000 trees with the help of hundreds of volunteers of all ages. Everything we do is hands-on and welcoming – you don't need special skills, just curiosity and a pair of sturdy boots.

Membership helps us buy trees and tools, cover insurance and training, and fund free events so everyone can get involved. It also connects you with a friendly group of neighbours who care about East Fife's future and want to see places like Dreel Woods flourish.

If you'd like to support local nature and join us by the burn and in the woods, please become a member at £5 per year. Every new member makes a real difference. Scan the QR code above to sign up and find out about upcoming volunteer days and events.



GILLINGSHILL NATURE RESERVE FOR SALE

Gillingshill Nature Reserve near Arncroach has been put up for sale by Fife Council. The 17.89 acre reserve includes a reservoir and a mix of habitats with woodland and gorse scrub. The Dreel Burn runs through the woodland and there is a network of footpaths and a small parking area. The guide price is £30,000 and any sale is subject to a management agreement to preserve its status as a nature reserve. The site is subject to the Reservoirs (Scotland) Act 2011. Residential development will not be permitted.

Gillingshill, officially opened as a local nature reserve in 2006 by Lord Jamie Lindsay, is a haven for wildlife, especially birds, and is much loved by the local community.



ST JOHN'S SUMMER FAYRE

This popular annual event held on 26 July attracted a record number of folk this year enjoying the stalls and delicious teas in the sunshine, accompanied by live music. £2,600 was raised for church funds. Thanks to all who contributed to its success.

WELFARE REFORM

Wendy Chamberlain reports: In recent weeks, many constituents across North East Fife have written to me to share their concerns about the UK Government's proposed reforms to Universal Credit and wider welfare policy, including Personal Independence Payments (PIP). Although PIP has now been largely replaced in Scotland by the new Adult Disability Payment (ADP), there's no doubt that any expected changes will have an impact via future Scottish budget allocations. The Scottish Government has made a number of devolved welfare decisions, and a greater part of the Scottish budget is currently taken up in Social Security payments in comparison to other parts of the UK. However, we shouldn't forget that people with chronic illnesses, disabilities, and mental health conditions who are likely to be affected are understandably concerned about what lies ahead.

The Government's new Welfare Reform Bill proposes changes to the way support is assessed and allocated, and the changes are also likely to affect a number of unpaid carers, potentially up to 150,000, who will lose their allowance due to changes in the assessment of those they care for.

Here in North East Fife, we know that accessing the right support can already be difficult. I regularly hear from constituents facing long waits, confusing bureaucracy, and overly harsh assessments from both the DWP and Social Security Scotland. Reform is needed, but it must be compassionate and evidence-led. We all want to see growth in our economy and those that can work supported to find it.

The Liberal Democrats will stand firmly against any measures that erode the rights and support available to people who genuinely need help. We will table a reasoned amendment to this bill to remove its most harmful elements and push for reforms that focus on getting support right, not making harsh cuts. If selected for voting, and if successful, this will prevent the bill from progressing to its later stages.

There's also mounting opposition within the Labour Party itself, with a number of Labour MPs tabling their own amendment, and we wait to see which amendment will be selected on the day. The Government could be left relying on support from the Conservative Party to pass its legislation, which would be extremely damaging to the Prime Minister's authority.

I will continue to speak up for constituents affected by these proposals, as well as recognising the importance of using Government funding appropriately. I urge the UK Government to think again.



The Scottish Parliament
Pàrlamaid na h-Alba



WENDY CHAMBERLAIN MP
Member of Parliament for North East Fife

WILLIE RENNIE MSP
Member of the Scottish Parliament for North East Fife

SUMMER TOUR 2025

Please take this opportunity to raise issues and concerns with your constituency MP & MSP. No appointment is necessary.

East Neuk & Landward - Thur. 21 August


- 08:40 to 09:10 - Pittenweem Primary
- 10:00 to 10:30 - Elie Deli
- 12:00 to 13:00 - St Monans Mini Market
- 13:15 to 14:15 - Pittenweem Hub
- 14:40 to 15:10 - Anstruther Primary
- 15:30 to 16:00 - Corner Shop Colinsburgh
- 16:30 to 17:30 - Crail Co-op
- 18:00 to 19:00 - Anstruther Co-Op

Wendy Chamberlain MP
Unit G1, Granary Business Centre, Coal Road, Cupar, KY15 5YQ
01334 656361 wendy.chamberlain.mp@parliament.uk

Willie Rennie MSP
Unit G1, Granary Business Centre, Coal Road, Cupar, KY15 5YQ
01334 656361 willie.rennie.msp@parliament.scot



Data Protection Act 2018: If you write to Wendy Chamberlain asking for her assistance, she may allow authorised staff and volunteers to see the information you have sent her. She and her staff may also pass all or some of the information to relevant organisations if this is deemed necessary to help with your enquiry. Please contact us with any questions or concerns about how your information will be processed. The cost of this advert has been met from parliamentary resources. The SPCB is not responsible for the content of external websites.



CRAIL MUSEUM & HERITAGE CENTRE PRESENTS

"SILENT SAVE FOR THE SOUND OF THE WAVES"
The Hidden Cold War Legacy of JSSL
(Joint Service School of Linguistics)
At Crail Airfield

A Talk by Craig McHugh

15th August 2025

Please note change of date

TICKETS £5 INCLUDING LIGHT REFRESHMENTS

TICKETS AVAILABLE FROM CRAIL MUSEUM
ON OUR WEBSITE WWW.CRAILMUSEUM.UK
OR ON THE DOOR

TALKS BEGIN AT 7.30PM IN CRAIL KIRK HALL
DOORS OPEN AT 7PM

EAST NEUK DEVELOPMENT MAKES AFFORDABLE HOUSING A REALITY

Kingdom Housing Association has unveiled 29 affordable homes in Pittenweem in a boost to housing availability in the East Neuk. The development at Station Court marks another success for Kingdom, working in partnership with Campion Homes, offering affordable accommodation in an area where house prices are unachievable for many. Members of the Kingdom Boards recently toured the site to see the finished results of the project that began construction in April 2024.

Linda Leslie commented: 'The development is another example of our team providing top-quality homes where they're needed.

The amount of hard work that's gone into this project is incredible and I'm so impressed with the finished homes. Kingdom is committed to providing homes for customers, who remain at the heart of everything we do. We've worked hard to provide affordable housing for families that will be genuinely life-changing.'

Reinforcing the challenges of local affordable housing, Councillor Sean Dillon said: 'House prices in this area . . . are significantly higher than the national average, and with short-term lets dominating, there are very few private rentals available. I grew up here, and a lot of young people move on just to find affordable accommodation. While that works well cost-wise, it's taking people away from their family and support network, especially when they have young children.'

Both councillors reiterated that because the school rolls along the coast have fallen, they're fully supportive of developments that will encourage families to live in this area affordably.

The Pittenweem site comprises 29 homes for social rent, with a mix of one 2-bedroom wheelchair bungalow, 2-bedroom cottage flats and 2, 3, 4 and 5-bedroom family homes. All are designed to Kingdom's high standards and will achieve the Bronze Standard of Sustainability. They have air source heat pumps to future-proof this sustainability, improving energy efficiency, reducing carbon footprint, lowering utility bills and requiring minimal maintenance.

Further information about the development including a Project Information Pack and support provided for tenant integration can be obtained from www.kingdomhousing.org.uk, Tel: 01592 630922, Email: customerservices@kha.scot



ST MONANS FOOTPATH LINK COMPLETED

Work recently reached completion of the final footpath link between Lochay Homes and Queen Margaret Street, St Monans, providing safe access for pedestrians and cyclists into the village. This was a planning condition of the Lochay Homes Approval fought for by the community who wanted a pedestrian and cycle link to the new homes, having successfully persuaded local councillors at Fife Council and on the St Monans & Abercrombie Community Council and some residents not to have an access road.

Bill Porteous





The waterfront at Anstruther



Pittenweem
Parish Church



Coffee Morning Come for a Cuppa and a Chat

Looking for something to do on a **Wednesday morning?**
Then come along for a coffee/tea and a chat/blether
and Raffle! to the Parish Church Hall.

Church Hall, James Street
Wednesdays from 20th August
10.00 - 11.30 am

Back again through **Autumn and Winter**
Special thanks to all our 'regulars' supporting
Local groups, Charities and the Parish Church

All Welcome
Come along and support us.



Guide
Dogs

Name
a Puppy



**Name
a puppy...**
and be a part of their story

Material for inclusion in Pittenweem Post should be sent to post@pittclie.org.uk not later than 5pm Sunday for publication the following Friday. **Dates for your diary** – the next issue will be published on **Friday 12 September 2025**, contributions please not later than **Sunday 7 September**.

Any views expressed in letters or articles submitted are solely those of the author and not the publishers. We reserve the right to edit copy content, length and style. Submission does not guarantee inclusion. Copyright is reserved to the publishers. Editorial Team: Roger Brown, Hazel Mills, Jane Forbes. Any complaints must be initially submitted to the publishers.

We thank you and hope you have enjoyed reading the Post! Why not also become a contributor?
We always appreciate receiving information and stories – past and present – about our community.