

Pittenweem Post

10 July 2026, Issue no. 42

Pittenweem Post is our monthly community newsletter, produced by volunteers at Pittenweem Community Library. Back issues are on our website www.pittenweemlibrary.org.uk. Paper copies are also available at Barnetts, One Market Place and the library – copies are free but we welcome donations of £1 to offset the cost of printing.

Huge thanks to a generous library member for sponsoring this issue of the Post.



CELEBRATING OUR COMMUNITY

In case you've been working too hard and hadn't noticed; it's SUMMER!! For some of us that might mean a wee break from the hard work and a holiday, in the sun. For those of us with a garden however... there's no such thing as a holiday! Gardens are a labour of love and looking after one can demand more time, energy and money than you might be prepared to give. So a helping hand, or two, is a gift.

Taking a welcome break from my own chores recently I paid a visit to the Community Gardeners at Ninian Fields. As a recent resident of Pittenweem this isn't a part of the village I know well, other than whizzing past on the way to the dump. Invited by Wendy Wood, I joined a gang of pink clad women on a strip of land between the housing and farmland. The energy and enthusiasm of these women was irresistible. And the evidence of their work was very impressive. Trees, shrubs and perennial plants burst with colour, shape and a happy chance-design, displaying 15 years of community activity. Many original gardeners are still active but some have passed on, their memories enshrined in commemorative trees and celebrated with visiting interlopers.

I didn't do any gardening on this visit; chatting with a gang of pink clad women is exhausting! But help was at hand. Tucked away in a specially built hut, large, pink, drinking vessels emerged alongside pre-chilled 'fizzy drinks'... not lemonade. I managed to stay for 2 hours... next time I'll do better!

Janet Dick

WOULD YOU LIKE TO TRY SINGING IN A CHOIR?

A choir that performs with an orchestra in East Neuk venues? A choir that rehearses in Pittenweem? That's the Anstruther Phil.

New members are welcome to join us for our new season, starting in September, to rehearse our Christmas concert. No auditions required – just enthusiasm! A friendly welcome is guaranteed.

Find out more at our Social and Singalong on 18 August, 7pm in Anstruther Church.

For more details, email secretary@anstrutherphilharmonic.org or check out our website at www.anstrutherphilharmonic.org.

Give it a go! We hope to meet you soon.



LYDGATE

Everyone seems agreed that before the 19th century Pittenweem had two town gates: one at the junction of Abbey Wall Road / Marygate and the other at Tollcross, at the junction between South Loan / Viewforth Place. Sadly, this is only half right: there was a splendid gate at the eastern side (Abbey Wall Road / Marygate), but what about the other one?

There are two problems here. Firstly, before the mid-19th century Viewforth Place and James Street did not exist – the latter was a bypass built around this time to overcome congestion in the High Street. The Pittenweem Register (no. 342 Saturday, Aug. 30, 1851) explains the situation:

The new street, on the turnpike road, from the east end of the town to the Toll-bar is James's Street, and the one from the Toll-bar northward, formerly 'Green Loan', is now called Charles Street.



Site of West Port

Secondly, Tollcross had nothing to do with town gates. It was simply the office where people paid a toll to use the recently built turnpike road to St Monans.

In earlier times, traffic entering town from the East came through the East Port, along Marygate to the market stance (at the corner), then down the High Street. You could have got out of town by turning north along South Loan / 'Green Loan', but that would only have taken you and your cows up to Grangemuir. This was no use if you were



Map of Pittenweem in the late 16th Century

going to St Monans. In the words of an observer in 1845: 'Were toll gates considered ornamental, Pittenweem would have good cause to rejoice, as she enjoys the benefit of four of them within her very limited locality – one on the east entrance into the town, the second on the 'steelyard' [public weighing machine, tron] adjoining, the third on the road leading to Grangemuir, and the fourth on the west entrance.'¹ Where was the 'west entrance'?

The High Street continued, as it does today, past South Loan and out along the Braes to Pathhead. This was where the West Port of Pittenweem used to be – just before the junction of the High Street and West Wynd (the steep pathway leading down to West Shore). Here, in medieval times, a gate was placed across the road to control movement in and out of town, to and from the west and to receive customs dues.

This stretch of the High Street was known as the Lydgate. In this word, the element 'gate' means not 'a gate', but 'a road' or 'a street', e.g. Marygate, Gateside, Windygates. The element 'lyd' meant 'a lid', 'a removable protective cover' or, as here, 'a gate' (either a swing-gate or a frontier gate). The old name 'Lydgate' meant, therefore, 'Gate Street'.²

I think we should reinstate the old street-name for this section of the road.

Anthony Lodge

¹ William Pagan, *Road reform: a plan for abolishing turnpike tolls* (Edinburgh, 1845)

² See *liggat* n. *DOST* – per DA25.[120].

PITTENWEEM COMMUNITY COUNCIL

The next meeting of the Community Council will take place on Wednesday 19 August at 7.30pm in the New Town Hall in Session Street. Members of the public are most welcome to attend.

You can read the minutes of the June meeting at www.pittenweemcc.org.uk.



IAN STEWART MEMORIAL TRUST FORMATION AND STUFEST CONCERT

We are pleased to announce the formation of the Ian Stewart Memorial Trust. An application has been lodged with the Scottish Charities Commission to become a registered charity.

Ian Stewart (known as Stu) was born in Pittenweem at Kirkclatch farm and was a founder member of the Rolling Stones; he played piano on many recordings and at live performances.

The trust's aims are:

- to provide a permanent memorial in Pittenweem
- to organise an annual fundraising event to be known as Stufest to facilitate and encourage group musical performance in the local area.

Stufest will take place this year on 18 July in Pittenweem New Town Hall at 8pm – please see the poster for more details.

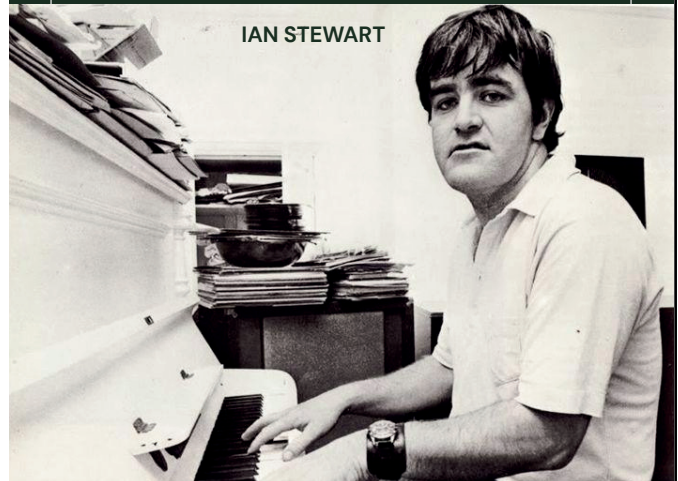
ORGANISED BY THE IAN STEWART MEMORIAL TRUST



STUFEST

A FUNDRAISING EVENT MARKING WHAT WOULD HAVE BEEN, PITTENWEEM BORN ROLLING STONES FOUNDER MEMBER, IAN STEWART'S 88TH BIRTHDAY. PROCEEDS TO GO TO PROVIDING A PERMANENT MEMORIAL IN PITTENWEEM.

OUR FOUR PIECE LIVE BAND WILL BE PLAYING THE KIND OF MUSIC THAT "STU" WOULD HAVE LIKED - BOOGIE PIANO, BLUES AND ROCK FROM THE 50'S/60'S; INCLUDING NOT JUST ROLLING STONES SONGS, BUT LOTS OF OTHER GREAT STUFF FROM THE ERA.



IAN STEWART



BUY TICKETS

NEW TOWN HALL, SESSION STREET
PITTENWEEM

GET YOUR TICKETS: WWW.STUFEST.ORG

(7.30PM DOORS OPEN - 8PM-10PM)
BYOB

SAT
18
JULY

ST JOHN'S ANNUAL SUMMER FAYRE – WIN £100!

St John's welcomes everyone to their Annual Fayre, held once again in the garden of the Great House on Saturday 25 July 2-4pm. Follow the sound of the music and enter from Priory Court and Cove Wynd. There will be all the usual stalls, with games for children, and the entry of £4 includes homemade refreshments. Children under 12 are free.

Founded in 1805, St John's has held many, many fetes over the decades. The advertisements for these make excellent reading! In 1903, the eight stalls in the Grand Bazaar included one selling 'fancy articles, many being of paper mache', while another sold 'lovely Armenian work, Indian boxes and a Canadian canoe'. The graphologist on the Palmistry and Graphology stall proved particularly popular.

These fetes of old, as today, had the age-old purpose of raising money for church funds and enabling folk to have fun. Do come along, rummage through bric-a-brac, buy your plants, enjoy the baking, take the chance of touring the historic priory site with Professor Tony Lodge and chance your arm at winning a bottle on the Water into Wine stall. The raffle prizes are excellent and include a 1st prize of £100.

**St John's Pittenweem
Summer Fayre**

**IN THE GARDEN OF THE GREAT HOUSE
PRIORY COURT
SATURDAY 25TH JULY, 2-4pm**

**Entry £4 includes tea and cake
Children under 12 go free!**

**3.30pm PRIZE DRAW!
Win £100 Cash/Restaurant & Vouchers**

**Plants & Produce Baking
Water into wine Books
Bric-a-brac
Tombola**

Don't miss! Tour of the Priory grounds with Tony Lodge £3.50

Please note we are only able to accept cash at this event - thank you!
St John's Church is a Registered Scottish Charity no SC010982



PATHHEAD GARDEN CENTRE PRETTIES UP PITTENWEEM!

The Pretty Pittenweem Project would like to thank Fiona at Pathhead Garden Centre for her kind donation of plants to the local Community Council which has allowed some volunteers from the Pretty Pittenweem Project to undertake some much-needed planting around the village over the past few weeks. This kind donation has brought some colour to our village and some joy to local residents too so...Thank you very much indeed!

These beautiful plants do need some love from us Pittenweemers now so if you live or work near one of the planters or the boat at the end of James Street going towards Anstruther, and are able, can you please water the plants (and pull out the odd weed here and there)?

Also, if you have identified a planter that is in need of some work, or you are interested in joining us to plant in the planters along the east shore in the village in July, please get in touch at prettypittenweemproject@gmail.com or via the [Pretty Pittenweem Project facebook page](#).

The Pretty Pittenweem Project

PITTENWEEM GARDENERS RAISE OVER £4500 FOR CHARITY

Pittenweem gardeners' decision to open on both Saturday and Sunday this year certainly paid off, with the amazing sum of £4520.00 being raised over the weekend. Of this, 40% will benefit Scotland's Gardens' charities and the remaining 60% will be split between Scottish Wildlife Trust Ltd and Alzheimer Scotland.

Twelve gardens opened, several for the first time, ranging from tiny to very large, and many visitors took advantage of the extended opening to spread their visit over the two days. Many also took advantage of the good weather to enjoy tea and cake on the terrace at Old Church House, as well as the view.

A huge thank you to the gardeners of Pittenweem for providing everyone with such inspiring gardens to enjoy. Thanks must also go to Pittenweem Arts Festival for the use of The Art Rooms to sell entry tickets, to all the visitors from near and far and to everyone who helped on the day.

Fay Smith

Seabeach, West Shore, is open on Sundays from 1 – 5pm until the end of July or by arrangement till 31 August – see [Scotland's Gardens Seabeach](#) for more information.



Credit Helen Gillespie



Credit Ruth Robinson

POP-IN FROM A POP-UP

When Alan Waugh and his partner chose to downsize around a decade ago, they decided to sell items they no longer needed in a temporary 'pop-up' space at the harbour. The huge car showroom at 8 Backgate owned by Peter Hastie and so familiar to locals came up for lease and Alan, ever the entrepreneur as a property developer, saw a chance to try something new and the Pop In we all know was born. Following Covid-19, Alan reorganised the premises, ensuring the back stair and the full top floor were used, and spaces from a cabinet or a couple of rails to several cubic feet are now let to no fewer than 24 vendors. Alan has always taken an active interest in what is sold and used to attend a local auction house every Wednesday. Now he focuses more on ensuring the flow of movement from one space to another is easy to navigate and continues to tempt and intrigue customers from near and far.



Vendors know what people like and the Pop In's friendly servers, Alan Fraser and Gina Allen (known as Alan and Mrs Allen), are ready to offer advice. Everything you can imagine can be found here, from antiques and art to glassware and furniture, and the business is an absolute haven for vintage lovers. And there are lots of pre-loved clothes on sale. The fact that there's plenty parking space attracts the many holiday makers who drop in; locals also visit regularly. There are lots of interesting items for sale – and free ideas!

Alan is not a man to stand still. He is currently developing the space beside the Pop In and has 12 storage units for lease, 11 of which are let already. A large office will soon be available, suitable as an exhibition space or business opportunity, together with four container-type business units. Two EV charging spaces – the first in Pittenweem – and a card payment facility at the busy car wash will also prove invaluable. More details can be found on the [Pop In Facebook page](#). With Alan, it's always 'watch this space!'



THE WEST BRAES PROJECT

Further improvement work was carried out last month at the West Braes. Many thanks to Provan for replacing the sleepers on the banking to secure the ground. We are now looking at planting to help brighten up the area.

Crazy golf is open every day during the school holidays 11am to 5pm subject to volunteer availability and the weather. Please check our Facebook page for updates or message us if you have a particular date/time in mind for visiting the crazy golf.

Date for your diary this month: Saturday 18 July 12–3pm – Strawberry Fayre. We will also have an information stall at the Anstruther Harbour Festival on Saturday 29 August.

We are always looking for new volunteers to help – whether at the hut, painting our crazy golf course, completing funding applications, gardening or maintenance. If you have a couple of hours to spare, please get in touch – thewestbraesproject@gmail.com.

We also welcome supervised younger volunteers who can gain hours towards the Saltire Award – more information available from the Project.

Mairi Kerrigan



SWIFTS, SWALLOWS AND MARTINS

It's that time of year when a glance overhead can be rewarded by the wonderful sight of swifts and/or swallows, and perhaps martins, hawking – catching flying insects on the wing. But to the untrained eye it may not be easy to tell which species you're observing.

The common swift (family Apodidae) is dark grey with long narrow scythe-shaped wings. In flight, swifts alternate between short periods of very rapid wingbeats and gliding, often screaming in unison as they fly low above buildings in the evening.

The barn swallow (family Hirundinidae) is slightly smaller and has shorter triangular-shaped wings compared to the swift. Swallows are bluish black above and off-white below. They have a characteristic red throat and forehead, and a deeply forked tail with wire-thin streamers, although these features can be hard to see in flying birds. Swallows are also fast and powerful on the wing, but their flight appears more 'fluttery' than the swift.

Another member of the swallow family commonly found in towns, villages and farms is the house martin, which is white below and blue/black above except for the easily recognised white rump. Related

sand martins nest each spring/summer in the sandy banks along the coast path towards St Monans, where they can be seen hawking in small, dispersed groups. Sand martins are among the smallest of the swallows. They are a rather dull grey/brown above and white below but with a grey-brown breast band.

These species are all long-distance migrants that spend the winter in Africa. Enjoy trying to spot and identify them while they're around in our area during the summer.

For more information on all the birds you might see around and about, the Collins Bird Guide is recommended.



Swallow on nest at Grangemuir



This **SUMMER** there will be **BOOKS HIDDEN** in plastic folders around the village for **CHILDREN (0-10 years)** to **READ** and then put back. We hope you **ENJOY** taking part!

pittenweemlibrary.org.uk

Pittenweem Community Library
Cove Wynd KY10 2LE

SCIO Charity registration no. SC047013

Free photography exhibition **Fishing Life in Pittenweem**

Wednesday 8 - Monday 27 July

Mon & Wed 2-5 / Fri & Sat 10-1



© Andrew Denholm

Pittenweem Community Library, Cove Wynd KY10 2LE

SCIO Charity registration no. SC047013

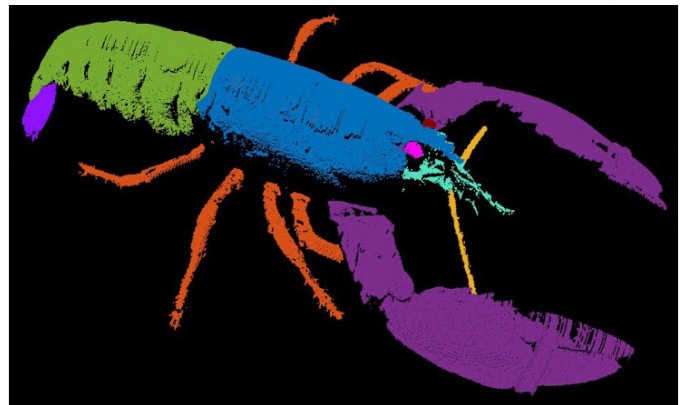
HOW DO WE KNOW HOW MANY CRABS AND LOBSTERS WE CAN CATCH?

Fishing communities are often the first to spot when something is changing at sea. Maybe lobsters are appearing in different places, crabs are becoming harder to find, or the catch looks a little different from one year to the next. That local knowledge is hugely valuable and, when combined with good data, it can help protect the future of shellfish fisheries.

This is where Merra-scan comes in.

The Coastal Resources Management Group at the University of St Andrews have developed Merra-scan, a portable scanning system designed to sit on the back of working creel vessels and scan crabs and lobsters as they come aboard.

When an animal is passed through Merra-scan, the scanner creates a 3D image of that animal and records when and where it was caught. Using mobile phone technology built into the scanner, the information related to each scanned animal is automatically sent back to our computer server at St Andrews where AI helps to measure key features, such as the size of the animal as well as the sex and weight.



From catch to computer: every animal is scanned to create a detailed 3D model that can be measured automatically. Left: lobster being scanned using Merra-scan. Right: annotated 3D scan of a lobster. Credit Vicki Balfour.

Why does this matter? Because good decisions depend on good information. By counting and measuring crabs and lobsters, scientists can build up a picture of the health of the population. This is known as a 'stock assessment' and helps inform decisions about how many animals can be caught sustainably.

But building that picture and collecting this information is not easy. Scientific surveys take time, cost money and can only cover so many places. As a result, stock assessments are not undertaken regularly and are often based on relatively small samples from limited areas.

This is why researchers are exploring new ways to gather useful data with fishers, without adding unnecessary burden. Merra-scan is designed to do just that: it is portable, battery-powered, quick to set up, and easy to learn to use. The idea is that selected vessels could use the scanner for a couple of days, perhaps once or twice a year, and that way we can start to gather a much better picture of the status of the stocks locally as well as nationally.

Collecting data in this way would also allow fishers and fisheries managers to get a common understanding of how things are changing and what sort of management measures could be used to protect the stock while also minimising the impact on fishers.

We are now looking for local volunteers to work with us, trial the system, and give us feedback on how we can improve the system. If you are interested in helping us test Merra-scan, or would simply like to know more, please contact us via crmg.st-andrews.ac.uk/contact/ or email Mark James at maj8@st-andrews.ac.uk.



*Merra-scan installed on a working creel vessel
Credit Anastasia Ellis*



Pittenweem Arts Festival

Bringing colour to the East Neuk

For one extraordinary week, **1–8 August 2026**, our picturesque fishing village will become a living gallery, with more than 190 artists exhibiting across over 90 venues! Wander through Pittenweem's narrow lanes, streets and bustling harbour to encounter not only remarkable art but also the rich heritage, character and coastal beauty that make the East Neuk so special.

The Festival proudly presents invited artists Ella McKay and Morvern Graham, alongside Yimou Huang, recipient of the Henderson Inglis Bursary Award 2026. Ella's work explores the relationship between puppets and their audiences through playful and thought-provoking creations. Morvern is a storyteller, illustrator and printmaker whose work draws inspiration from Scottish and Scandinavian folklore. Yimou Huang works across sculpture, ceramics and installation, exploring the relationship between Chinese Taoist philosophy and Western eco-feminist thought. The Festival will also present the Emerging Artists Exhibition, providing a platform for some of Scotland's most exciting new artistic talent.

Alongside its visual arts programme, the Festival features an expanded programme of music, performance, workshops and community events. Highlights include performances from acclaimed Scottish musicians Kathryn Joseph, Cloth, and Free Love, alongside a lively Community Ceilidh. There's lots for families to enjoy, including a free opening weekend pop-up in partnership with WILDHOOD Children's Festival, featuring storytelling, flower crowns, and arts and crafts. You can browse the full events programme and book tickets through our website: www.pittenweemartsfestival.co.uk/events

The Festival Office will be open 5 days a week from 13 July (closed on Wed and Sun) and every day throughout the Festival. Pop in to buy the brochure, book events, and meet the team. Distribution of the usual residents parking cards will be completed in the coming weeks.

We'd like to say a huge thank you to the Pittenweem community who allow us to use their lanes and venues, and to the many volunteers who are vital to the delivery of the Festival.

We look forward to seeing you there!

PITTENWEEM COMMUNITY CRAFTERS AT THE ARTS FESTIVAL

Pittenweem Community Crafts are delighted to be taking part in this year's Pittenweem Arts Festival, running from 1 to 8 August. You'll find us upstairs at the Coastline Community Church, where we'll be showcasing a beautiful selection of handmade, one-of-a-kind items created and donated by our talented local crafters.

From artisan knitted garments and cuddly creatures to gorgeous gifts and special treats, made with a charming, farming theme, there's sure to be something to catch your eye. You can feel good while spending, since every purchase helps support charity. This year, all our proceeds will go to the Royal Highland Educational Trust (RHET) and Crossroads (Fife).

For a sneak peek at some of the lovely items, please visit our Facebook and Instagram pages. We look forward to welcoming you during the festival.

The Pittenweem Community Crafters



NEWS FROM COAL FARM

'Daddy! Daddy! Why are you crushing all these potatoes with the forklift?'

'Because, young master Peddie, we are going to grow mashed potatoes this year!!....'

This is not a conversation that took place between Murray and me, but unfortunately crushing potatoes with the forklift is something we have had to do. Yields over the whole country were very good last year and this means that not all the tatties were needed. Most people who grow tatties are in the same boat with thousands of tonnes over the whole of Europe meeting the same fate. Potatoes need to be refrigerated to allow us to keep them past New Year and you can imagine the cost of keeping them cold right throughout the summer, so storing them endlessly is not an option for us. Eventually we had to take the decision to dump them.



Even that course of action is by no means simple. Potatoes are a pernicious weed if they grow up in other crops. They are hard to kill, especially in carrots, so we have to be very careful where we dump them. Added to this, we have to make sure that heaps of old potatoes are not allowed to grow as these dumps are a prime source of blight – blight is the fungus that caused the Irish Potato Famine in the 1840s and it is still a major concern every year for tattie growers.

The field chosen is one that we never grow carrots or potatoes in, but we had to sacrifice the barley growing in part of the endrig. Although it is time-consuming to do, the crushed tatties break down much more quickly and the liquid that is released means that uncrushed tatties are less likely to grow. Finally, the dumped potatoes will be covered with dung, to prevent any regrowth. Once the barley in that field is harvested, the dung and potato mix will be spread over the ground and ploughed in and, fingers crossed, the tatties will be gone for good. It is a lesson that you learn early in farming that there are no certainties: the markets, weather and luck can all conspire against you sometimes and leave you with an expensive headache.

Pete Peddie

Come and join us for...

**Summer
In the Loft**
@Ardrossfarm

Sat 1st & Sun 2nd August

Original work from
Scottish artists & makers.

9am-5.30pm, Ardross Farm Shop, by Elie KY9 1EU

**Pittenweem
Arts Festival**
1st-8th August 2026

THE ST ANDREWS
PHOTOGRAPHERS
VENUE 6

I'm exhibiting!

HISTORIC HOUSE AT THE HARBOUR TO BE AUCTIONED

Number 1 The Gyles is one of Pittenweem's historic houses. Sitting at the pier head it has a fine view over the east end of the harbour. The house along with its neighbours forms the Gyles complex which dates from the early seventeenth century and was restored by the National Trust for Scotland in the early 1960s as part of the Little Houses Scheme. The restoration by architects Wheeler and Sproson breathed new life into the Gyles and won awards from both the Saltire Society and the Civic Trust.

This unique A-listed house was last owned by artists Ewen McAslan and Isobel Colville, who transformed the top floor into studio space. It will be sold by auction on 16 July. Auction Details - 1 The Gyles, Wester Gyles, Pittenweem, Anstruther, Fife - GUIDE PRICE £305,000. View further details at www.futurepropertyauctions.co.uk.

For more information about the restoration project see *Little Houses: The National Trust for Scotland's Improvement Scheme for small historic homes* by Watters and Glendinning (2006). There is a copy of this book in Pittenweem Library.



EAST NEUK CHURCH SERVICES

St Aidan's East Neuk @ Pittenweem, Anstruther and Cellardyke

Sunday services at 11.30am.

12 July – Pittenweem

19 July – Cellardyke

26 July – Anstruther

2 August – Pittenweem (Arts Festival)

9 August – Cellardyke

Coastline Community Church, Pittenweem

Sunday services with Sunday school at 10.30am.

Tel. 01333 312041

<https://coastlinechurch.org.uk/>

St John's Episcopal Church, Pittenweem

Sunday services at 11.30am.

St Michael's Episcopal Church, Elie

Sunday services at 9.45am

Kilrenny Parish Church

Sunday services at 9.45am. Services are recorded and available on the church website, along with additional information on events

<https://e-voice.org.uk/kilrenny/>

Crail Parish Church

Sunday services at 10am. Tea & coffee served following the service.

12 July – Revd Ian Hamilton

19 July – Revd Ewen Gilchrist

26 July – Revd Gilbert Nisbet

Sunday services are 'live' streamed as video recordings, which can be publicly accessed from our YouTube channel, or via the Crail Church website. More information is provided on the notice posted in the church entry vestibule.

Chatbite every Wednesday in the Kirk Hall 10pm – 12noon. Feel free to pop in – only £3.

Most Holy Trinity Church, Crail

Sunday Mass at 9.30am. Wednesday Mass at 12noon.

Kingsbarns Parish Church

Sunday services at 9.45am. For more information, contact Revd Wotherspoon on 07711 706634 or wotherspoonrig@btinternet.com.

KIPPER'S SUMMER CLUB AT THE SCOTTISH FISHERIES MUSEUM, ANSTRUTHER

Once again there are lots of FREE activities for youngsters during the holidays.

SUMMER CRAFTS DROP-INS

Catch the Wind: Kite-making Workshop

on Thursday 16 July 10.30am – 12.30pm

Wind was important in powering sail boats like the Reaper. Make a kite to catch the wind. All materials provided. Open to all ages. Booking advised; some spaces available on the day.

Knots and Twine Drop-in

on Tuesday 21 July 1.30pm – 3.30pm

Learn the ropes and get knotty! Learn some basic knots to play around with or make something to take home, like a classic rope coaster or sturdy monkey fist keyring. No previous experience required. All materials provided. Open to all ages.



Rag Rug Flowers Workshop and Drop-in on Thursday 30 July 10.30am – 12.30pm

Using recycled scraps and traditional rag rug techniques, learn how to bloom a garden of colourful fabric flowers. Simple 'Snip and stick' versions also available. All materials provided. Open to all ages.

Lino Printing Workshop on Tuesday 4 August 1.30pm – 3.30pm

The workshop is suitable for children over 7 who must be supervised by an adult as sharp tools will be used. All materials provided. Booking is advised; some spaces available on the day.

Colourful Cross Stitch Drop-in on Thursday 13 August 10.30am – 12.30pm

We'll provide patterns and bright threads; you provide the creativity. Perfect for beginners. Wee ones can create their own stitch-like patterns using paper, pens and stamps. Open to all ages.

Please see www.scotfishmuseum.org or contact Julia Branch on 01333 310628 or julia@scotfishmuseum.org for more information and to book your space. Donations welcome.



PITTENWEEM YOUTH FOOTBALL CLUB

NOW RECRUITING NEW PLAYERS!

WE ARE LOOKING FOR PLAYERS IN
THE FOLLOWING YEAR GROUPS:


2011/2012


2014


2015


2016



TRAIN TWICE
WEEKLY IN
PITTENWEEM



WINTER TRAINING
AT WAID ASTRO



WEEKEND MATCHES
THROUGHOUT THE
SEASON

**FUN, FRIENDSHIP AND FOOTBALL DEVELOPMENT
FOR ALL ABILITIES!**

*Whether you're new to football or already playing,
WE'D LOVE TO WELCOME YOU TO THE CLUB.*



FOR MORE INFORMATION,
CONTACT US VIA MESSENGER
OR BY EMAIL:
pyfc2013secretary@gmail.com





Crail Festival Indoor Market





Our stallholders produce a wide variety of quality arts and crafts, including wood, tweed, wool




and fabric products, cards, photography, jewellery, honey, jam, and much more... plus the Festival Café!

Entry is free!

10am - 4pm, Sunday July 26th
Crail Community Hall



Pittenweem harbour, credit Jerzy Morkis

DON'T MISS YOUR COPY OF THE POST!

Would you like to receive the Post by email?

If so, all you have to do is email post@pittcliv.org.uk with **Subscribe** in the subject line. You will receive an email on the second Friday of each month with a link to the new issue of the Post. The Post keeps you up to date with what's happening in the Pittenweem area. If you enjoy reading it please tell your friends and neighbours. Interested in contributing? Our editor would love to hear from you at post@pittcliv.org.uk.



**St Adrian's East Neuk
Church of Scotland
Pittenweem,
Anstruther & Cellardyke**



**Coffee Morning
Come for a
Cuppa and a Chat**

Looking for something to do on a **Wednesday morning?**
Then come along for a coffee/tea and a chat/blether
and Raffle! to the Parish Church Hall.

Church Hall, James Street

Wednesdays

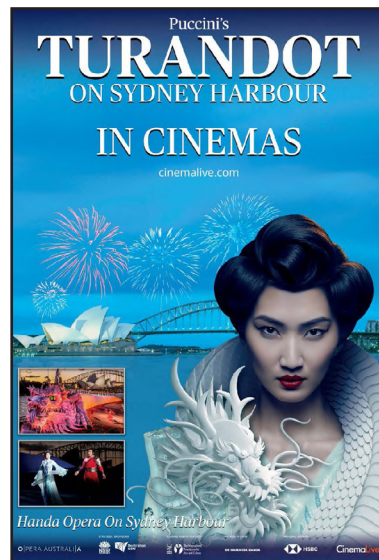
10.00 - 11.30 am

Summer break in July

Back again in August

Special thanks to all our 'regulars' supporting
Local groups, Charities and the Parish Church

All welcome



**Coming to Crail
TURANDOT
ON SYDNEY HARBOUR**

This Handa Opera on Sydney Harbour production, directed by Chen Shi-Zheng, is known for its lavish sets, including a 25-meter dragon and a 20-meter pagoda, and its use of contemporary cinema and Chinese acrobatics.

The production features a cast of world-class singers, including Dragana Radakovic as Turandot and Riccardo Massi as Calaf, and is known for its powerful rendition of "Nessun Dorma".

Don't miss out on the chance to experience this powerful interpretation of a classic opera!

Wednesday, 19th August 2026 – 7.00 pm
Crail Community Hall – BYOB
Tickets £14

www.crailcommunityhall.co.uk



Material for inclusion in the Pittenweem Post should be sent to post@pittcliv.org.uk by 5pm Friday, one week before publication. **Dates for your diary:** the next issue will be published on **Friday 14 August 2026**, contributions to be submitted no later than **Friday 7 August**.

Any views expressed in letters or articles submitted are solely those of the author and not the publishers. We reserve the right to edit copy content, length and style. Submission does not guarantee inclusion. Copyright is reserved to the publishers. Editorial Team: Jane Forbes, Phil Hammond, Hazel Mills. Design: Lynda Donaldson, Carolyn Mills. Print: One Market Place. Any complaints must be initially submitted to the publishers.

We thank you and hope you have enjoyed reading the Post! Why not also become a contributor? We always appreciate receiving news, information and stories – past and present – about our community.